

RANK
9

SALT LAKE CITY, UT

(Salt Lake City, UT MSA)

Total Score = 66.3

Areas of Excellence (at or better than target goal):

- Higher percentage meeting both CDC aerobic and strength activity guidelines
- Lower percentage currently smoking
- Higher percentage in excellent or very good health
- Lower percentage with high blood pressure
- Lower percentage with angina or coronary heart disease
- Lower percentage with diabetes
- Higher percentage bicycling or walking to work
- Higher Walk Score®
- More ball diamonds per capita
- More dog parks per capita
- More park playgrounds per capita
- More park units per capita
- More tennis courts per capita

Improvement Priority Areas (worse than 20% of target goal):

- Higher percentage of days when mental health was not good during the past 30 days
- Higher percentage with asthma
- Higher death rate for diabetes
- Lower percentage of parkland as city land area
- Fewer acres of parkland per capita
- Fewer farmers' markets per capita
- Fewer basketball hoops per capita
- Fewer recreation centers per capita
- Fewer swimming pools per capita
- Lower park-related expenditures per capita

Description of Salt Lake City, UT MSA

Population	1,170,266
Percent less than 18 years old	28.5%
Percent 18 to 64 years old	61.6%
Percent 65 years old and older	9.9%
Percent male	50.2%
Percent high school graduate or higher	90.2%
Percent White	81.9%
Percent Black or African American	1.7%
Percent Asian	3.8%
Percent Other Race	12.7%
Percent Hispanic/Latino	17.6%
Percent unemployed	3.8%
Median household income	\$65,792
Percent of households below poverty level	7.0%
Violent crime rate/100,000*	392.2
Percent with disability	9.6%

*Due to differences in jurisdictional definitions and reporting, the FBI recommends that these rates not be compared across areas.

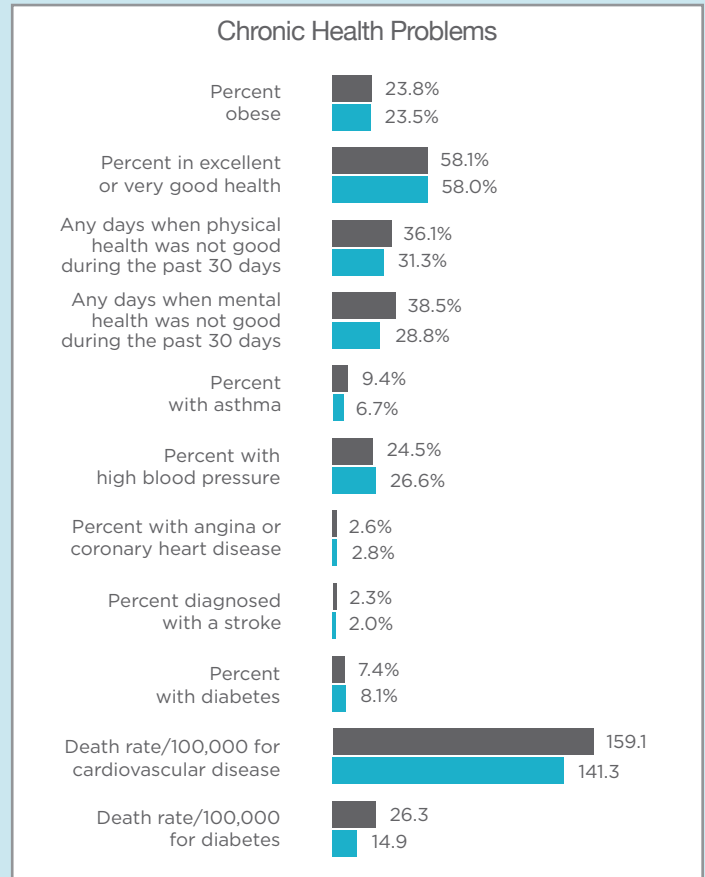
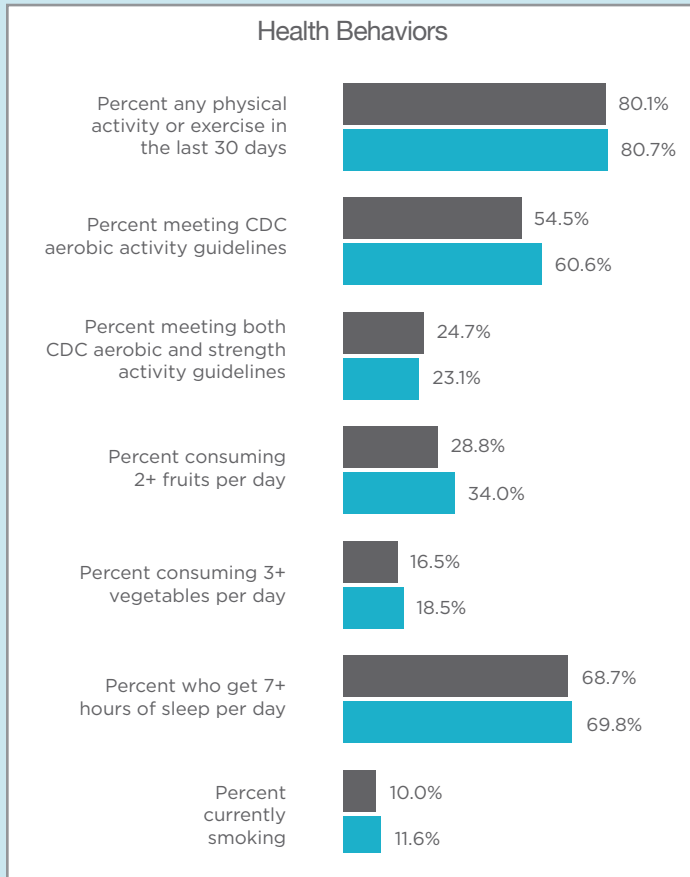
Supported by Anthem Foundation

Anthem
Foundation

ACSM American Fitness Index[®] Components

Personal Health Indicators – Score = 77.3; Rank = 6

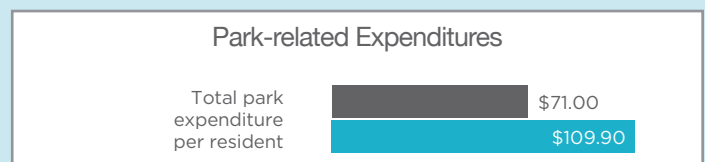
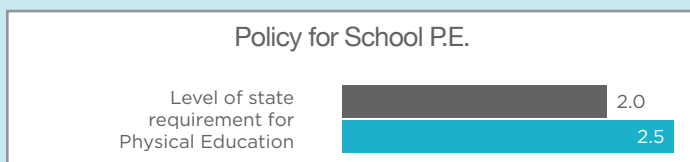
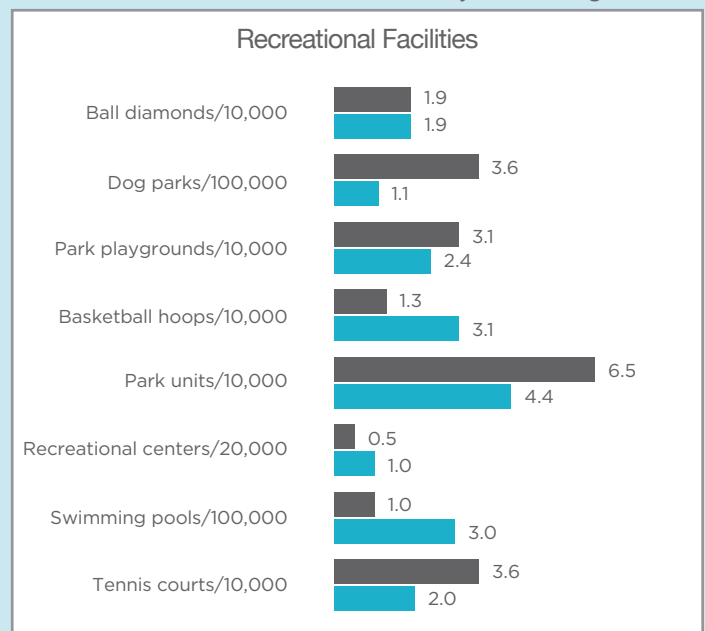
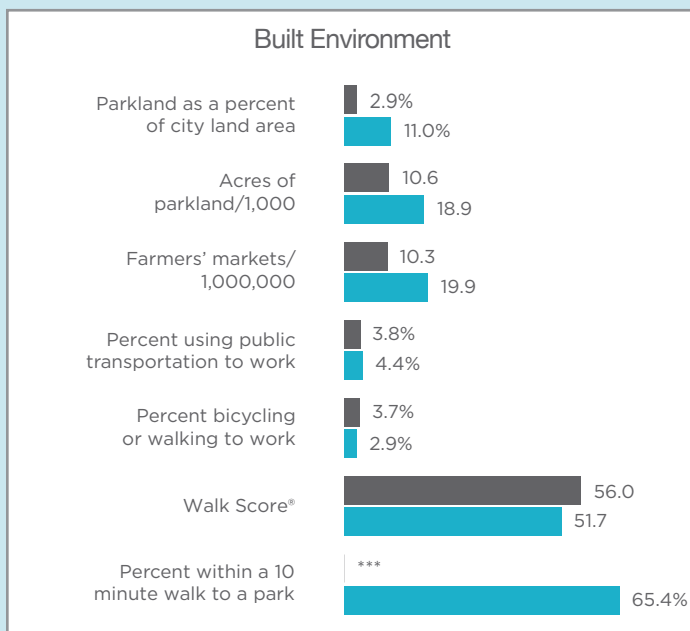
■ Salt Lake City ■ Target Goal*



Community/Environmental Indicators – Score = 52.2; Rank = 28

(note: most of these data were available only for the main city in the MSA)

■ Salt Lake City ■ Target Goal**



*The target goal for the Personal Health Indicators was the 90th percentile from the most recent three years, 2015 to 2017. For the newly added personal health indicators the target goals were 90% of the 2017 values.
 **The target goal for the Community/Environmental Indicators was the MSA average for 2015 to 2017. New or recently changed community indicators target goals were an average of the 2017 values.
 ***This measure was unavailable for this MSA. The community/environmental indicator score and total score were adjusted to allow fair comparisons with other MSAs.